

FOR LEASE: APPROXIMATELY 5,436 SF INDUSTRIAL SUITE

# 2151 ENTERPRISE STREET ESCONDIDO, CA 92029



Building in like-new condition. Just remodeled with:

- » New roof and skylights
- » New exterior and interior paint
- » New office remodel



**Justin Beattie**  
Palomar Commercial | Lic #01522337  
✉ [jbeattie@palomarcommercial.com](mailto:jbeattie@palomarcommercial.com)  
☎ 760.918.2600



**Barry Hendler**  
Lee & Associates | Lic #01008239  
✉ [bhendler@lee-associates.com](mailto:bhendler@lee-associates.com)  
☎ 760.845.3854



**Mike Erwin**  
Colliers | Lic #01242826  
✉ [mike.erwin@colliers.com](mailto:mike.erwin@colliers.com)  
☎ 760.930.7971



### PROPERTY HIGHLIGHTS

- Highly functional, modern era Escondido industrial suite for lease
- Space completely remodeled: New roof and skylights. New exterior and interior paint (including warehouse). Newly reconfigured and remodeled office space with new flooring
- Two over-sized (14' wide) roll-up doors
- Approximately 25% improved with office

- High image, professional corporate headquarters project feel
- Approximately 16' clear height
- Drive-around truck access
- Excellent access to Interstate 15, Highway 78, Del Dios Highway and Elfin Forest
- **LEASE RATE: \$1.70/SF GROSS (NO CAM CHARGE)**



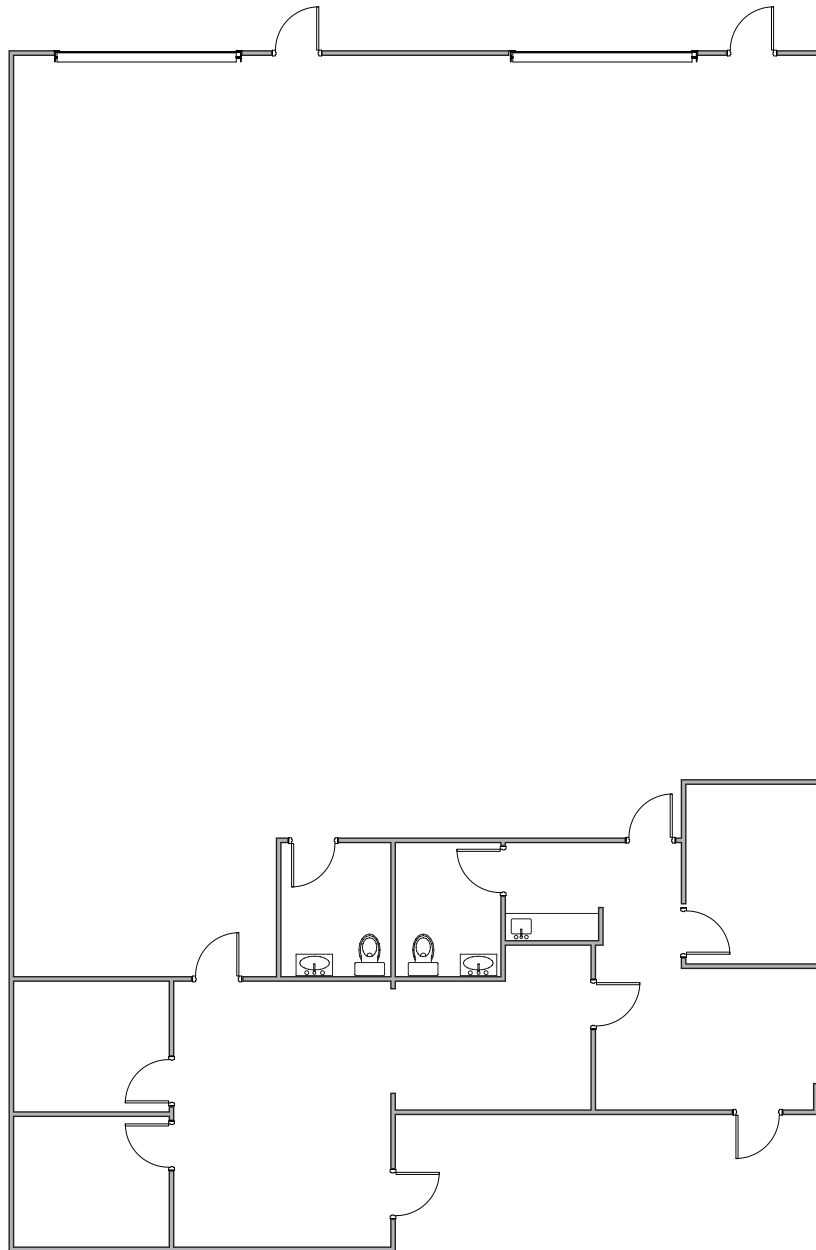
**Justin Beattie**  
Palomar Commercial | Lic #01522337  
📧 [jbeattie@palomarcommercial.com](mailto:jbeattie@palomarcommercial.com)  
📞 760.918.2600



**Barry Hendler**  
Lee & Associates | Lic #01008239  
📧 [bhendler@lee-associates.com](mailto:bhendler@lee-associates.com)  
📞 760.845.3854



**Mike Erwin**  
Colliers | Lic #01242826  
📧 [mike.erwin@colliers.com](mailto:mike.erwin@colliers.com)  
📞 760.930.7971



**Justin Beattie**  
Palomar Commercial | Lic #01522337  
✉ [jbeattie@palomarcommercial.com](mailto:jbeattie@palomarcommercial.com)  
☎ 760.918.2600



**Barry Hendler**  
Lee & Associates | Lic #01008239  
✉ [bhendler@lee-associates.com](mailto:bhendler@lee-associates.com)  
☎ 760.845.3854



**Mike Erwin**  
Colliers | Lic #01242826  
✉ [mike.erwin@colliers.com](mailto:mike.erwin@colliers.com)  
☎ 760.930.7971

# 2151 ENTERPRISE STREET

ESCONDIDO, CA 92029

## LOCATION



**Justin Beattie**  
Palomar Commercial | Lic #01522337  
📧 [jbeattie@palomarcommercial.com](mailto:jbeattie@palomarcommercial.com)  
📞 760.918.2600



**Barry Hendler**  
Lee & Associates | Lic #01008239  
📧 [bhendler@lee-associates.com](mailto:bhendler@lee-associates.com)  
📞 760.845.3854



**Mike Erwin**  
Colliers | Lic #01242826  
📧 [mike.erwin@colliers.com](mailto:mike.erwin@colliers.com)  
📞 760.930.7971